

EXHIBITION COLLECTIONS



Linda Witte Henke

Te Deum DESIGNS



I am a designer/artist specializing in the creation of work for use in liturgical settings. This means that the majority of my work reflects the seasons, themes, and colors of the Christian liturgical calendar that enriches the worship life of many churches, parishes, and congregations.

My sources of inspiration include sacred texts, hymns, and the theological reflections and insights that emerge on the course of my own faith journey. My designs are informed by academic degrees in journalism and theology, extensive studies in art and surface design, and experiences as a parish pastor and published author.

For many years, my art practice was focused on projects commissioned by churches and religious agencies. Since discontinuing my commission practice, I have focused on the development of digital designs for use in a variety of applications, including three collections of liturgical banners and ongoing collections of (free) liturgical visuals to support congregational worship.

I invite you to learn more about my ministry in the arts on my website. I welcome comments and inquiries about my work.

LINDA WITTE HENKE

15898 Harstad Drive, Westfield, IN 46074
linda@lindahenke.com www.lindahenke.com 317-567-7652

ENVISIONING THE WORD



Envisioning the Word is a collection of work inspired by biblical texts. The collection features two and three-dimensional work in varying styles and dimensions. The number of works fluxuates based on current availability.



EX NIHILO
(17.5 inches in diameter)

This work depicts the successive commands in Genesis 1 by which the Creator summoned the world into existence.



IN OUR IMAGE

(18 inches wide by 18 inches deep by 6 inches high)

Then God said, 'Let us make humankind in our image.' [Genesis 1:26]

Inspired by the Genesis creation account, this ceramic work images the Holy Trinity with three hands working together to fashion humankind out of clay.

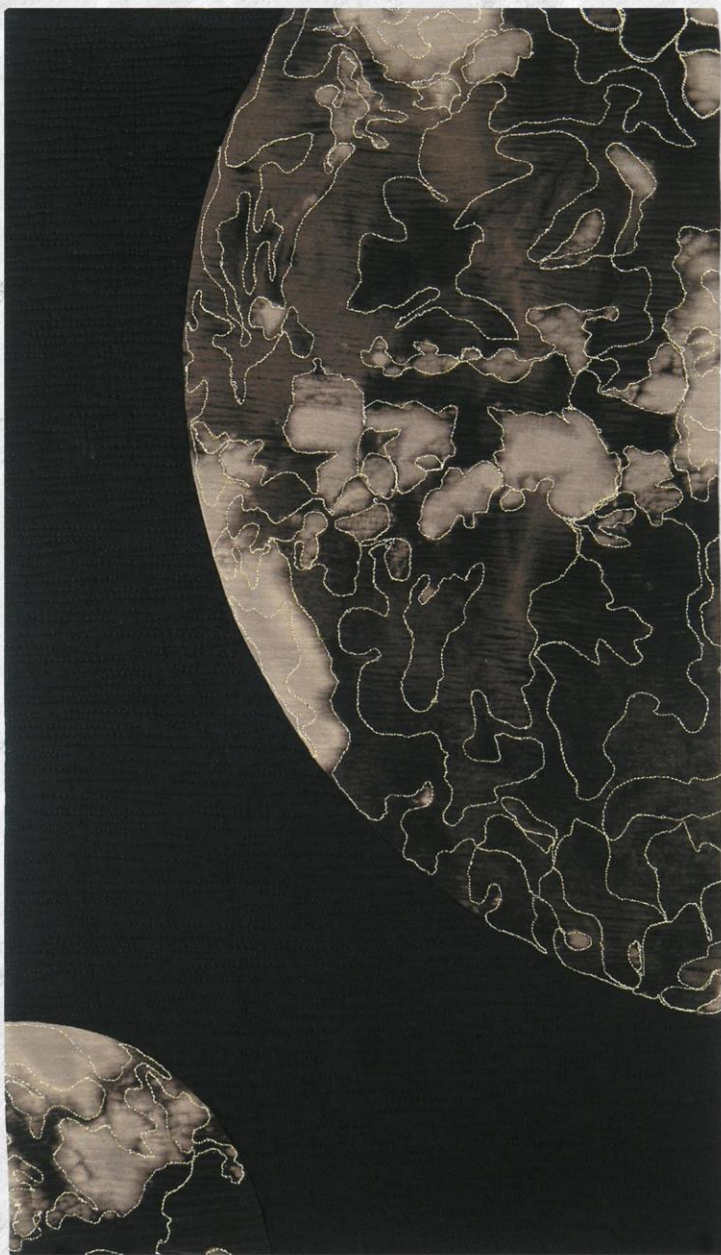


NO WHERE TO HIDE

[46 inches high by 21 inches wide by 5 inches deep]

They heard the sound of the Lord God walking in the garden at the time of the evening breeze, and the man and his wife hid themselves from the presence of the Lord God among the trees of the garden. [Genesis 3.8]

Born of necessity and characterized by fabric patches coupled with coarse hand stitching, the Boro (rags) technique is prevalent on garments worn by common laborers in northern Japan. *No Where To Hide* employs the boro aesthetic to image Creator God as a three-dimensional laboring coat, within which ceramic figures of Adam and Eve reside after their fall from grace. The work, which is a reflection on the "messiness" ingredient in creating, recreating, and sustaining the cosmos, expresses the artist's bad news/good news conviction that humankind can neither hide from God's judgment nor escape from God's love and grace.



GLOBAL PERSPECTIVE

(18 inches wide by 24 inches high)

This work speaks of the wonder of creation that extends beyond our planet.



STEWARDS OF ALL

(26.5 inches wide by 26.5 inches high, installed)

This work invites reflection on the responsibility that God has entrusted to humankind to care for creation, represented here as earth, air, fire, and water.



PROMISES

(33.5 inches wide by 30 inches high)

As a child, I had a plaque over my bed that depicted a rainbow, accompanied by the words, "The future is as bright as the promises of God." Inspired by memories of that plaque, this work references the conclusion of the Great Flood, when a rainbow appeared in the sky as a sign of God's everlasting covenant with humankind.



CONSEQUENCE

[Genesis 19:1-26]

The story of the destruction of Sodom is the only specific reference to Lot's wife. It concludes with her looking back and being turned into a pillar of salt.

A litany of losses shapes our lives:

unfulfilled hopes
aborted dreams
fractured relationships
unrequited loves
altered plans
unrealized promises.

Each loss must be grieved ...
but then we must turn away from the past
in order to perceive the endless possibility
of a future unfolding within and around us.

To remain focused on our losses
is to become paralyzed by our grief,
held captive by the past.

Remember my loss.
Remember my grief.
But do not re-member the consequence
of my salty paralysis.

Learn from my tears.

CONSEQUENCE

[21 inches wide by 63 inches high by 13 inches deep]

Inspired by the Genesis story about Lot's wife, this three-dimensional, life-scale sculpture, accompanied by a first-person narrative, invites viewers into this woman's life and story.



REDUX: JOSEPH'S COAT
[34 inches wide by 18 inches high]

REDUX references the Old Testament story in which Joseph's brothers sold him into slavery, destroyed his "coat of many colors," and told their father that his son was dead. The reconciliation that occurred many years later between Joseph and his brothers is depicted here as a primitive reconstruction of Joseph's coat. While retaining evidence of past violence, it nonetheless bears witness to the beauty and power of God's recreating reconciliation.

While much attention has been focused on God's creative power, I find that I am more drawn to God's recreative power -- God's power and inclination to fashion newness out of the tragic and painful rubble of the human condition.



COPPERED MOUNTAIN
(29 inches wide by 19 inches high)

*For the Lord your God is bringing you into a good land,
a land with flowing streams ... a land from whose hills you may mine copper.*

The view of the Rocky Mountains that used to greet me each day inspired this work,
grounded in the words of Deuteronomy 8.



FAMILIAR TALE

[Judges 19:1-30]

A Levite man and his host surrender the Levite's concubine to a brutal band of thugs in an effort to preclude Levite's violation. After the thugs rape, torture, and leave the woman for dead, the Levite hacks her body to pieces and disperses her dissected remains throughout the land as testimony to the inhospitable treatment to which he had been subjected.

When my Levite master first laid claim to me,
I dared to hope I'd found
safety and security from the dangers that prey on women.
Instead, I became just another chapter
in the familiar tale of violence against women:

rape
torture
murder
abuse
dismemberment
enslavement
exploitation
repression
prejudice
gendercide

Violence finds a home in each generation,
especially among

the least
the last
the lost

Weep with me.
Learn from my fate.
But re-member me
by working tirelessly
to bring an end to the violence.

FAMILIAR TALE

[16 inches wide by 65 inches high by
10 inches deep]

Inspired by the story in Judges about the Levite's concubine, this three-dimensional, life-scale sculpture, accompanied by a first-person narrative, invites viewers into this woman's life and story.



Psalm 30

JOY IN THE MORNING

(20 inches wide by 30 inches high)

*Weeping may linger for the night,
but joy comes with the morning.*

This work, inspired by the Indiana winter landscape,
bears witness to the hope and promise ingredient in
each new day.



Psalm 42

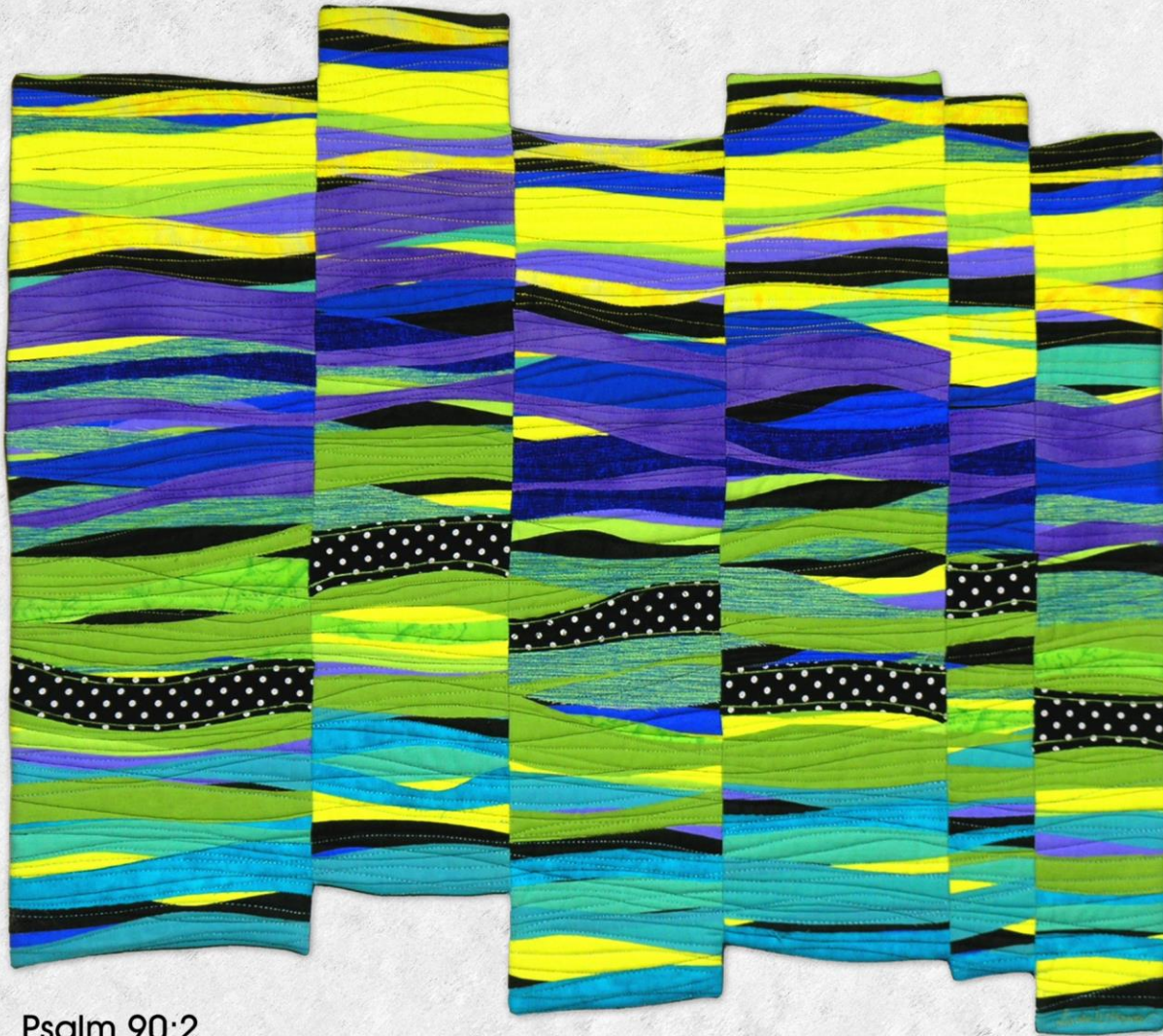
AS THE DEER

(28 inches wide by 16 inches high)

As the deer longs for living water, so my soul longs after you.

Over the course of my life journey, I have come to realize that all of the longings that contribute to the restlessness of my spirit are actually intimations of my longing for ever fuller and deeper communion with God.

This work was inspired by the imagery of Psalm 42, which serves as my personal touchstone for the peace that comes from attending to those longings.



Psalms 90:2

BEFORE THE MOUNTAINS

(28 inches wide by 24 inches high)

*Before the mountains were brought forth or ever you had formed the earth,
from everlasting to everlasting you are God.*

This work was inspired by the view of the Rocky Mountains that used to greet me
each day.



SO TEACH US

[21 inches wide by 34 inches high]

*So teach us to count our days that we may gain
a wise heart. [Psalm 90:12]*

My maternal grandparents were wheat farmers in Western Kansas. During the winter months, my grandmother quilted and crocheted and my grandfather wove rag rugs. SO TEACH US combines felted wool that my grandfather had cut into strips for his loom and crochet thread from the stash my grandmother left behind. The coarse stitching, reminiscent of the "hash marks" they often used for tallying sums, echoes the words of the psalmist -- an ancient prayer for personal and collective wisdom that is as vital today as in years past.



FROM THE WOMB OF MORNING
(32 inches wide by 19 inches high)

*From the womb of the morning,
like dew, your youth will come to you. [Psalm 110:3]*

Inspired by a phrase in Psalm 110, this work combines my digitally designed and commercially printed fabric with dense hand stitching to express the wonder ingredient in each new day.



Psalm 141
MY EYES ARE TURNED
(22 inches wide by 22 inches high)

*My eyes are turned toward you, O God.
In you, O God, I seek refuge.*

This work, featuring a stylized impression of Michelangelo's "David" sculpture, was inspired by the words of Psalm 141.



Psalm 141

RESIDENT ALIEN #1

(30 inches wide by 45 inches high)

*The Lord will watch over your going out and
your coming in, from this time forth and for
evermore.*

This work, featuring maps of the more than 30
places I have lived, invites reflection on the
contribution of high mobility to the a sense of
“homelessness” that pervades contemporary
culture.



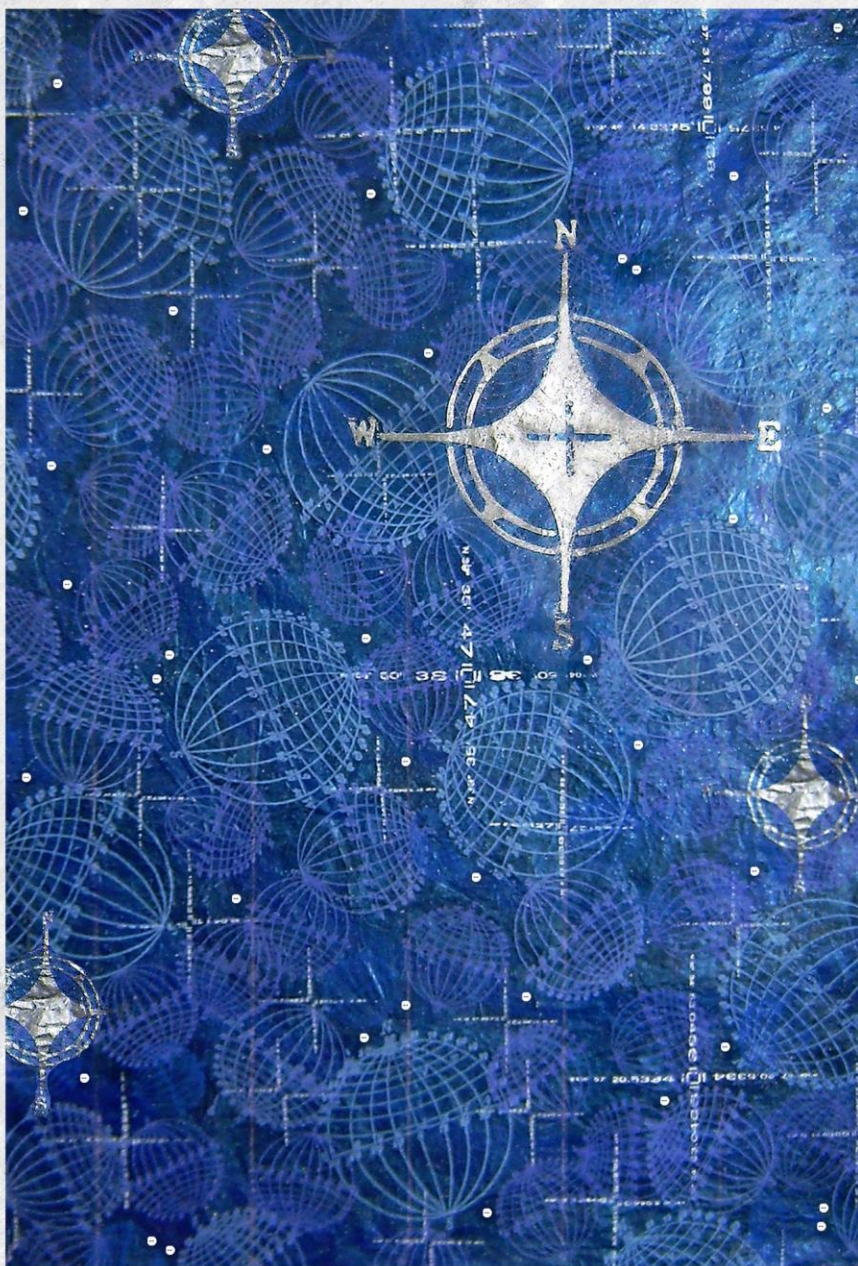
Psalms 141

RESIDENT ALIEN #3

(40 inches wide by 40 inches high)

The Lord will watch over your going out and your coming in, from this time forth and for evermore.

This work, featuring the zip codes of the more than 30 places I have lived, invites reflection on the contribution of high mobility to the sense of "homelessness" that pervades contemporary culture.



Psalm 141

RESIDENT ALIEN #4

(31 inches wide by 45 inches high)

*The Lord will watch over your going out and
your coming in, from this time forth and for
evermore.*

This work, featuring the longitude and latitude coordinates of the more than 30 places I have lived, invites reflection on the contribution of high mobility to the sense of "homelessness" that pervades contemporary culture.



TREE OF LIFE IV

(54 inches wide by 54 inches high)

*The tree was beautiful in its greatness,
in the breadth of its branches, for its
roots went down to abundant water.
[Ezekiel 31:7]*

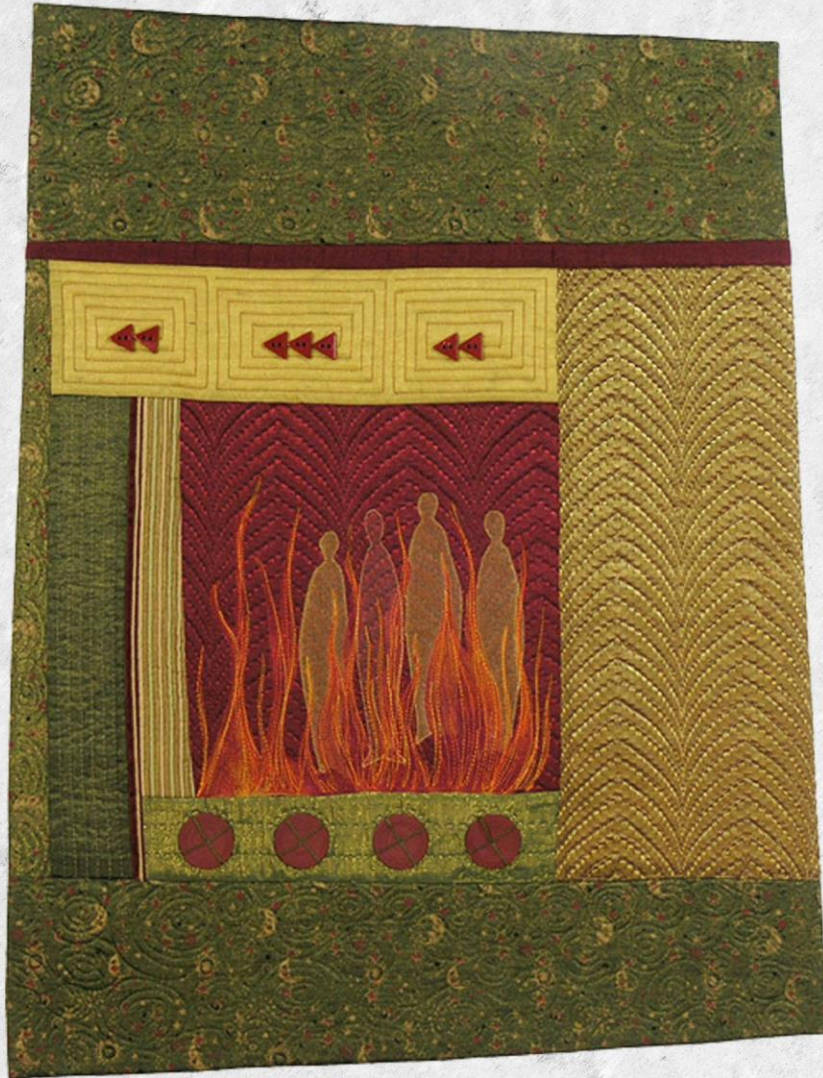
This design employs the stylized image of a tree to envision fullness of life under God's reign -- its branches imitative of the breadth of God's embrace, its colors reflective of the many seasons of God's activity and purpose, and its grounding reminiscent of the abundance of God's endlessly good intentions for all creation.



CAN THESE BONES LIVE?

[21 inches wide by 34 inches high]

This work was inspired by the prophecy in Ezekiel 37, which culminates in God bringing a valley of dry bones back to life.

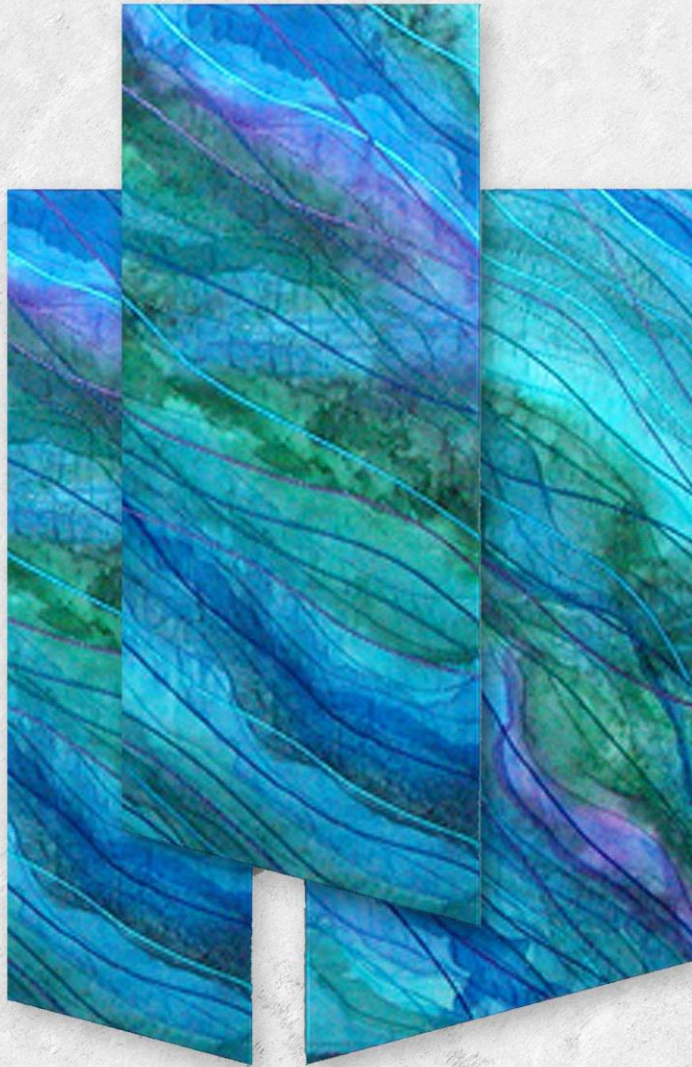


SHADRACH, MESHACH, AND ABEDNEGO

(21 inches wide by 27 inches high)

*Thus says the Lord, who created and formed you:
Do not fear, for I have redeemed you;
I have called you by name, you are mine.
When you pass through the waters, I will be with you;
and through the rivers, they shall not overwhelm you;
when you walk through fire you shall not be burned,
and the flame shall not consume you.*

This work depicts the story in Daniel 3 about Shadrach, Meshach, and Abednego, whom King Nebuchadnezzar had thrown into a fiery furnace for refusing to renounce their faith in God. It is linked with the words of Isaiah 43.

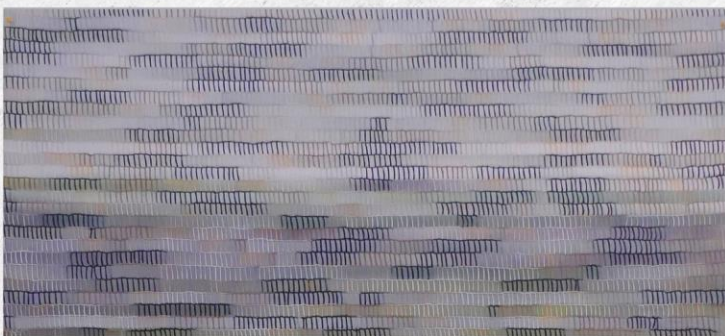


LET JUSTICE ROLL

(24 inches wide by 21 inches high)

*Let justice roll down like waters,
and righteousness like an everflowing stream.*

Inspired by these words from Amos 5, this work gives expression to the hope ushered into our world through the incarnational waters of Jesus' birth.



SEASONS: FOUR
(each 27 inches wide by 12 inches high)

God governs the times and whatever things come to pass in their seasons. [2 Esdras 13:58]

Inspired by the changing seasons, this work was digitally designed, commercially printed onto fabric, and densely hand-stitched with variegated floss.



MAGNIFICAT II

(33 inches wide by 33 inches high)

Although Mary has traditionally been imaged as submissive, timid, and subdued, my experiences with the biblical record leave me with a very different impression. This work employs vibrant colors, a whimsical style, and a posture of unrestrained praise to portray Mary as intellectually discerning ("How can this be?"), courageous ("Let it be with me according to your word"), and exuberant ("My soul magnifies the Lord and my spirit rejoices in God my Savior"). Both Mary's person and her song invite emulation of these God-favored qualities.



THEOTOKOS

(14 inches wide by 29 inches high)

*We are all meant to be Mothers of God,
for God is always needing to be born.*

Inspired by this insight of Meister Eckhart (a thirteenth-century Christian mystic), I chose to depict Mary with a mirrored face so that persons viewing this work might actually envision themselves in their calling to bear Christ into the world. Most people are captivated by the serendipitous discovery that the work also allows them to see others -- and to be seen by others -- in this role.



IN THE BEGINNING

[58 inches high by 23 inches wide]

In the beginning was the word [John 1:1]

Inspired by the opening verse of the Gospel according to Saint John, this work was digitally designed, commercially printed onto fabric, and embellished with improvisational machine stitching.



STORMY WEATHER

(13 inches wide by 17 inches high)

This work was created during hurricane season, when attention was riveted on satellite weather patterns. I was reminded of the disciples' amazement that even wind and waves responded to Jesus' commands.



ABUNDANCE
[24 inches wide by 24 inches high]

I came that all may have life and have it abundantly. [John 10:10, NRSV]

This work employs hand coiling techniques to depict the five loaves and two fishes that demonstrated the abundance of God's provision.



I AM THERE
[23.5 inches wide by 23.5 inches high]

For where two or three are gathered in my name, I am there among them. [Matthew 18:20, NRSV]

Waste from the floors of India sari manufacturing facilities, silk fibers harvested by workers from that waste, and yarn spun by workers from those fibers were combined with Eco-Fi felt (made from recycled plastic bottles) to create circles, a universal symbol of wholeness and community. The circles were then quartered and reassembled to create a new collection of diverse and energetic circles. The cruciform juncture of each reconstructed circle bears witness to Christ's presence amid the faith community.



YOU WOULD NOT

(22 inches wide by 10 inches high by 12 deep, installed)

How often have I, like a mother hen, longed to gather you under my wing, but you would not.

Inspired by these words attributed to Jesus, this work laments our human inability to comprehend that all are cherished by the same loving God.



DAY OF PALMS V
(12 inches wide by 12 inches high)

This work seeks to capture the sense of movement of palm branches in the Passion Sunday procession.



PIETA II

(17 inches wide by 25 inches high by 6 inches deep)

This work was inspired by my own experiences of grief.

Because I have experienced grief as having a disorienting quality, I chose to construct this three-dimensional sculpture using a nineteenth-century technique known as "crazy quilting." The drab palette expresses what I have experienced as grief's draining of color from my life. Mary's vacant form gives visual expression to my own experiences of feeling bereft, emptied of all that gives life meaning and purpose. I imagine Mary as having experienced similar manifestations of grief — and yet still finding the courage to be fully present to her Son and to the suffering ones of every time and place.



STABAT MATER

(24 inches wide by 36 inches high)

This work, which focuses on the events of Good Friday, invites reflection on universal themes of grief and loss.



Psalm 22

CROSS ROAD

(37 inches wide by 37 inches high)

My God, my God, why have you forsaken me?

This work, inspired by the words of Psalm 22 that Jesus quoted from the cross, invites reflection on the cruciform nature of the call to Christian discipleship.



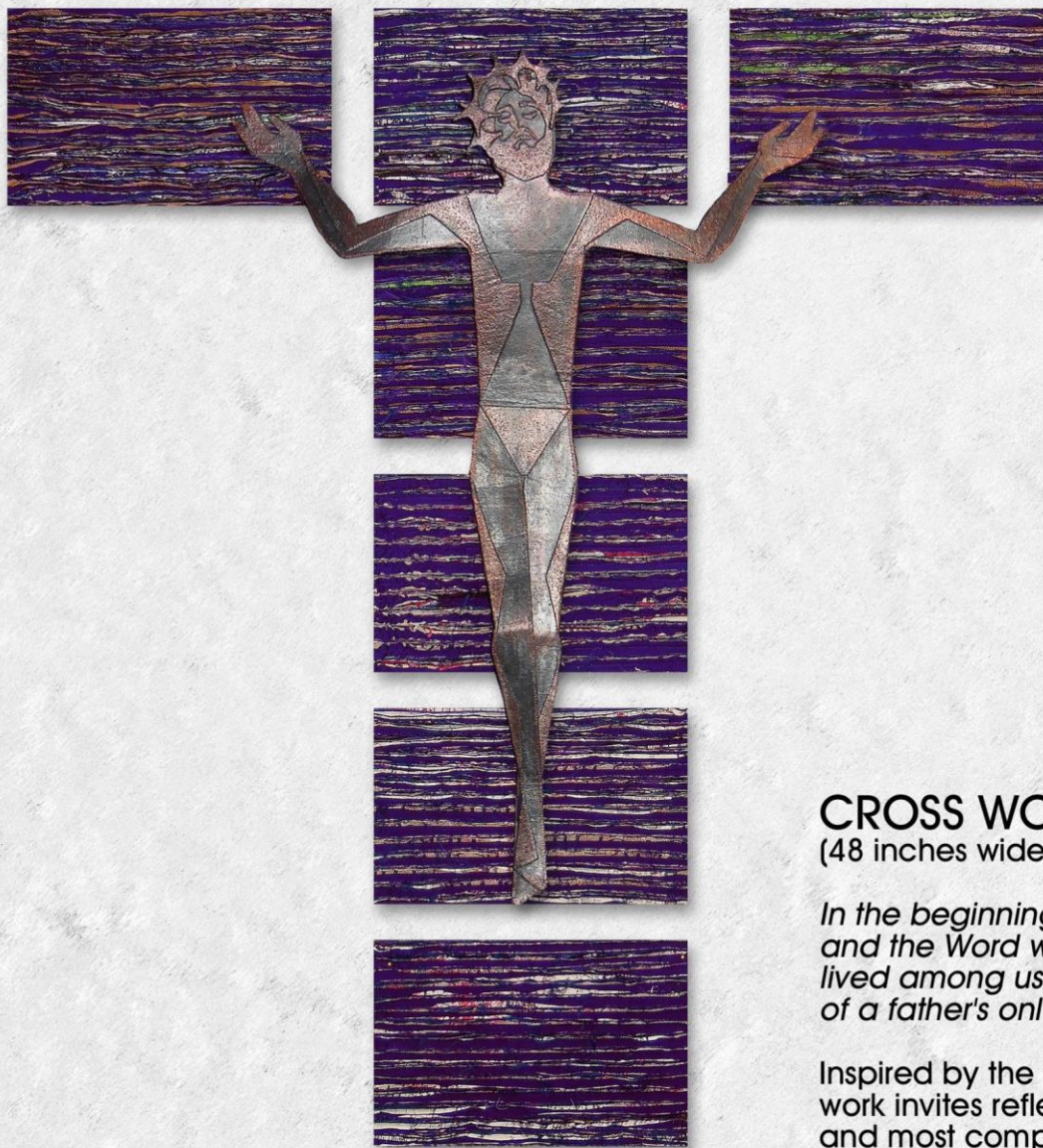
Psalm 22

FORSAKEN

(40 inches wide by 24 inches high)

My God, my God, why have you forsaken me?

Inspired by Psalm 22, this work gives visual expression to the forsakenness that Jesus experienced on the cross.



CROSS WORD

(48 inches wide by 53 inches high by 6 inches deep)

In the beginning was the Word, and the Word was with God, and the Word was God ... and the Word became flesh and lived among us, and we have seen his glory, the glory as of a father's only son, full of grace and truth. [John 1]

Inspired by the Seven Last Words of Jesus from the cross, this work invites reflection on God's Word, which comes to fullest and most compelling expression in the Son's death on the cross.



LOVE UNKNOWN
[12 inches wide by 69 inches high]

*My song is love unknown, my Savior's love to me;
love to the loveless shown, that they might lovely be.
O who am I, that for my sake
my Lord should take frail flesh, and die?
[Samuel Crossman]*

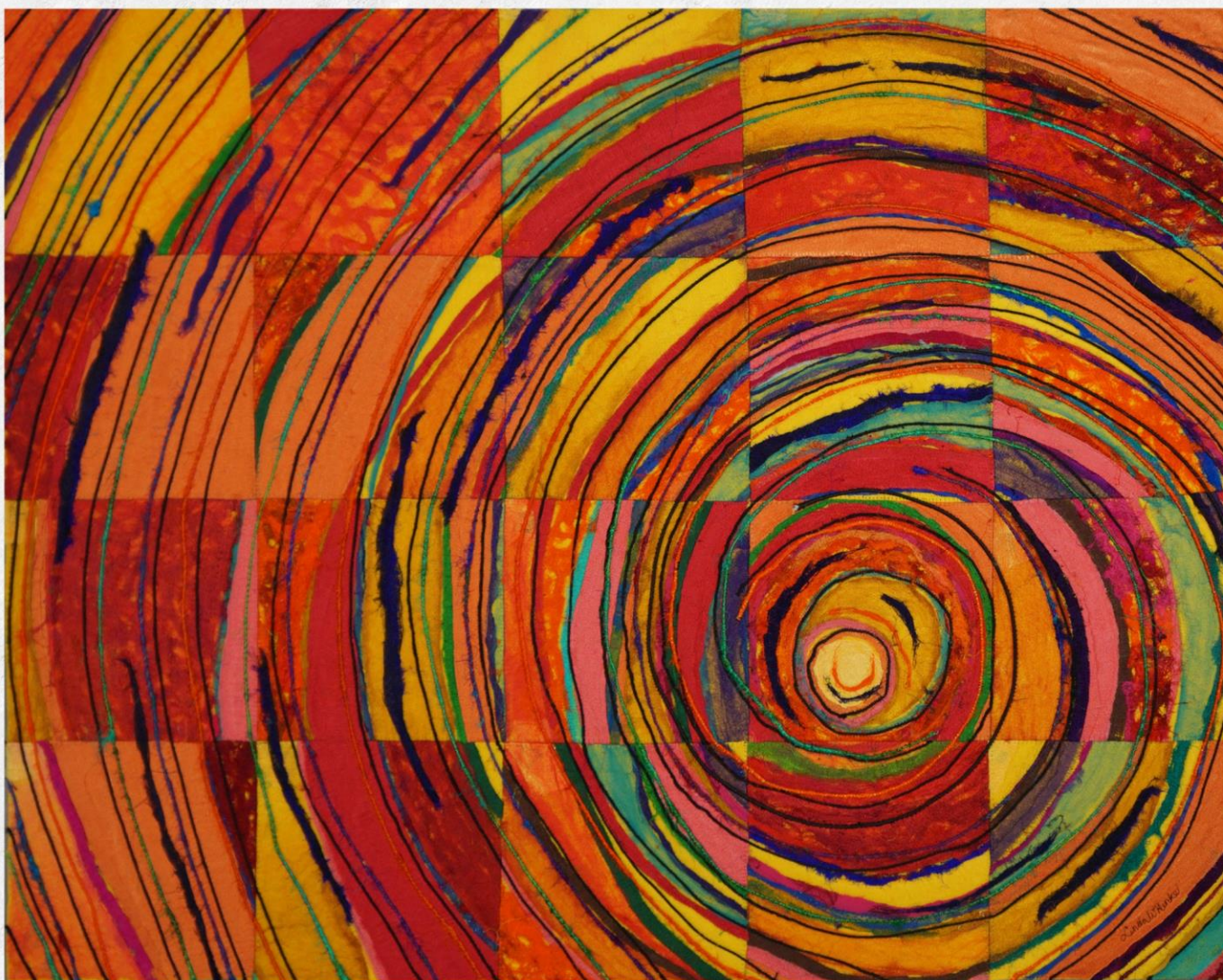
This hand-woven work, inspired by the hymn "My Song Is Love Unknown," was created from repurposed and altered paper (musical scores) and decorative threads in combination with a fabric background.



CHRIST CRUCIFIED/RESURRECTED

(36 inches wide by 42 inches high)

This work was inspired by a stained-glass window by Marc Chagall in the Frauenmunster of Zurich, Switzerland. As in Chagall's work, this piece depicts the crucifixion and resurrection of Jesus Christ as two events that must be held in dynamic tension.



BREAKING DAWN
(42 inches wide by 34 inches high)

By the tender mercy of our God, the dawn from on high will break upon us. [Luke 1:78, NRSV]

This work was created from fiber waste gathered by women from India from the floors of sari manufacturing facilities and spun into yarn.



ARISING GREEN

[35 inches wide by 35 inches high]

Love is come again, like wheat arising green. [John Macleod Campbell Crum]

Inspired by a phrase from a favorite Easter hymn, this digitally designed work images the resurrected Body of Christ as seeds of wheat bursting into new life. It is embellished with improvisational machine stitching.



RISEN

(23 inches wide by 30 inches high)

He is not here; he is risen, just as he said.

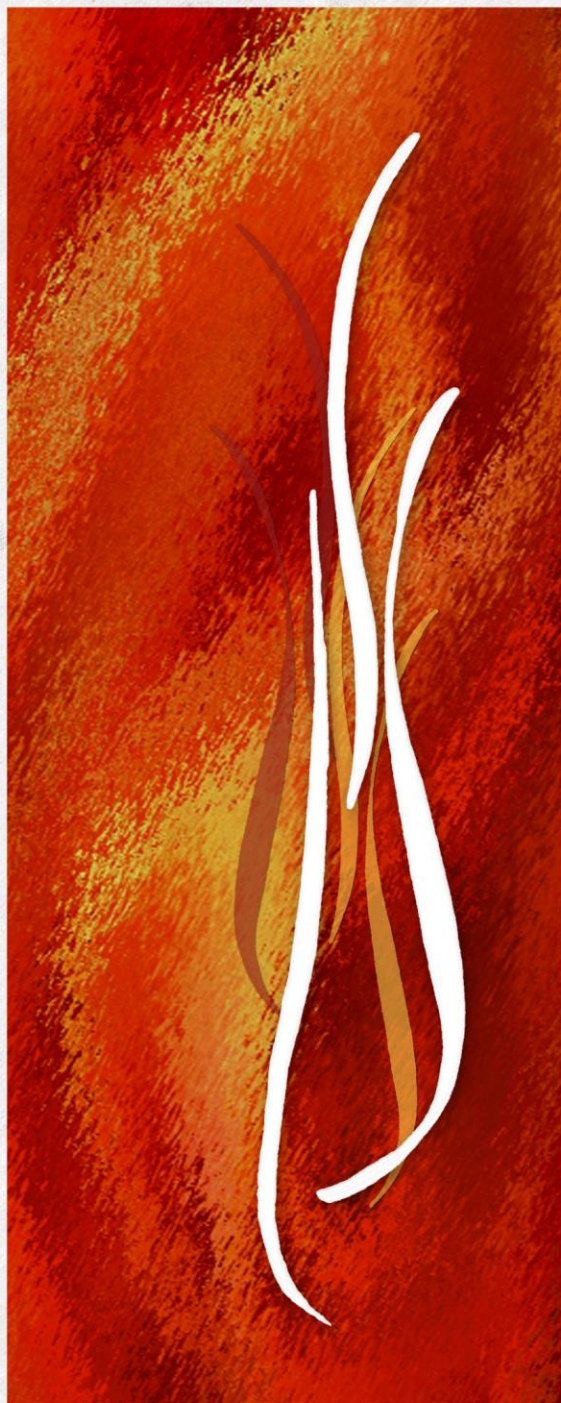
This work images the wonder of Jesus' resurrection through the absence of his corpus from the cross.



BODY OF CHRIST

(81 inches wide by 32 inches high, installed)

This work gives expression to the Body of Christ, both in the person of Jesus and in his followers, the Church. The five panels in this work progress (left to right) from Incarnation to Redemption to Resurrection to Empowerment to Commission. The ribbon of water running through all the pieces serves as a reminder that we are drawn into Christ by way of our baptism, which then also propels us into the world for ministry and mission.



COME, HOLY SPIRIT, COME
[58 inches high by 23 inches wide]

*Divided tongues, as of fire, appeared among them, and a tongue rested on each of them.
[Acts 2:3]*

Inspired by the opening verse of the Gospel according to Saint John, this work was digitally designed, commercially printed onto fabric, and embellished with improvisational machine



VENI, CREATOR SPIRITUS
(9.5 inches wide by 15 inches high)

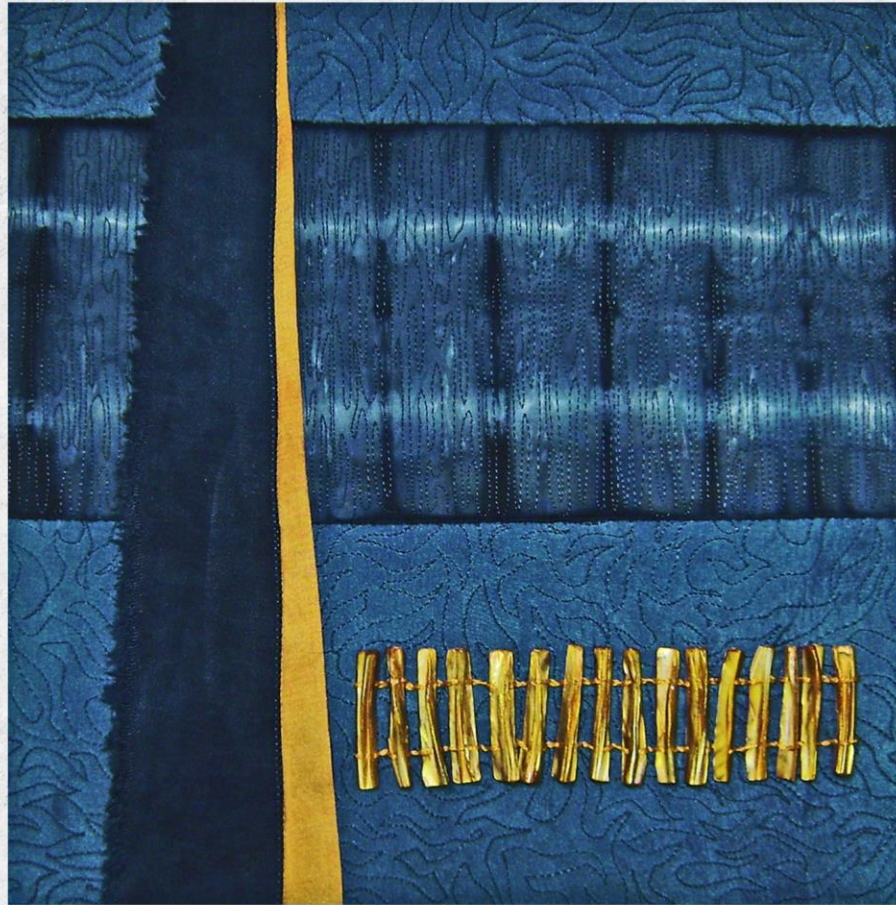
This experiment in visual temperature demonstrates
the uncontrollable quality of fire – and of the Holy Spirit.



FORMED, RE+FORMED, TRANSFORMED

This digital design was created to support and enhance parish, judicatory, and church-wide observances of the 500th Anniversary of the Protestant Reformation.

The design's vibrant red-orange-gold color scheme conveys a sense of God's ongoing activity within and among God's people. Hymn texts in the background of each panel add texture and bear witness to God's work across the centuries and around the globe. Three interlocking circles signal the Holy Trinity as the lens for reflecting upon God's love and faithfulness throughout the ages, reminding us that we are FORMED in the image of God, RE+FORMED through the cross of Christ, and TRANSFORMED by the power of the Spirit.



JOURNEY

(12 inches wide by 12 inches high)

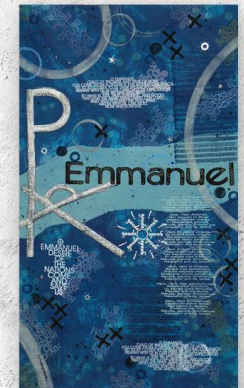
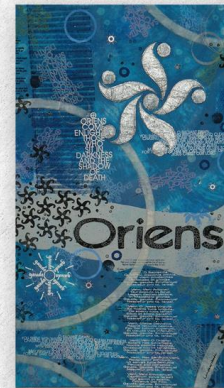
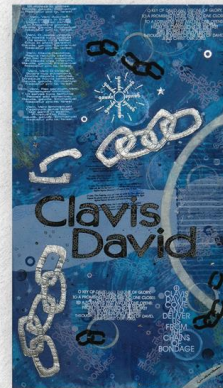
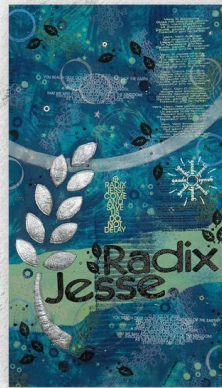
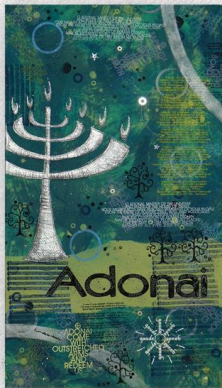
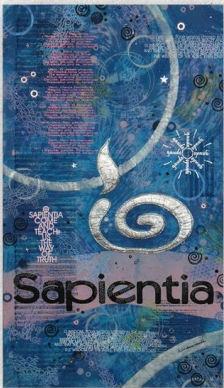
Lord God, you have called your servants to ventures of which we cannot see the ending, by paths as yet untrodden, through perils unknown. Give us faith to go out with good courage, not knowing where we go, but only that your hand is leading us and your love supporting us. Through Jesus Christ our Lord. Amen.

This work was inspired by the above prayer.

Exhibition Collection 2

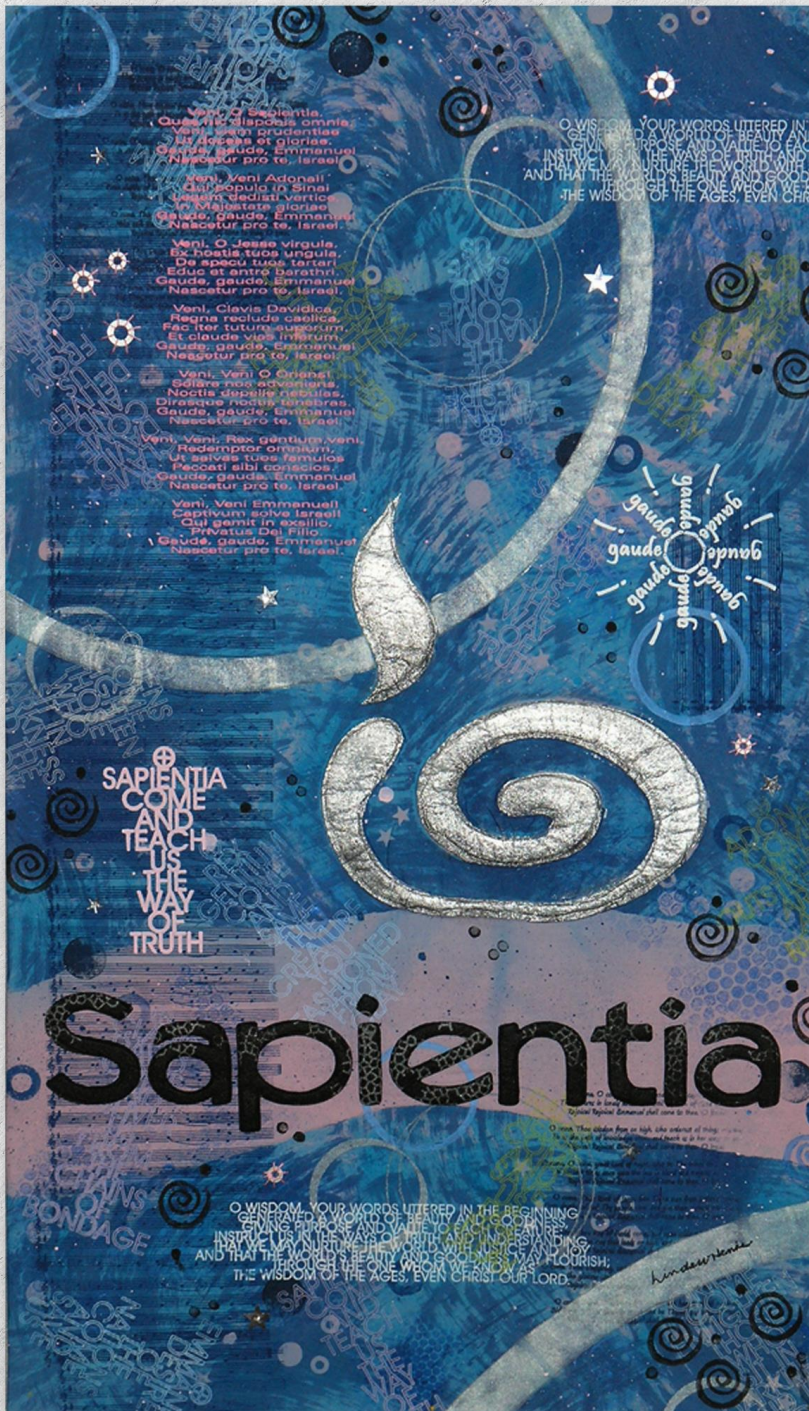
THE GREAT O ANTIPHONS

(176 inches wide by 41 inches high, installed)

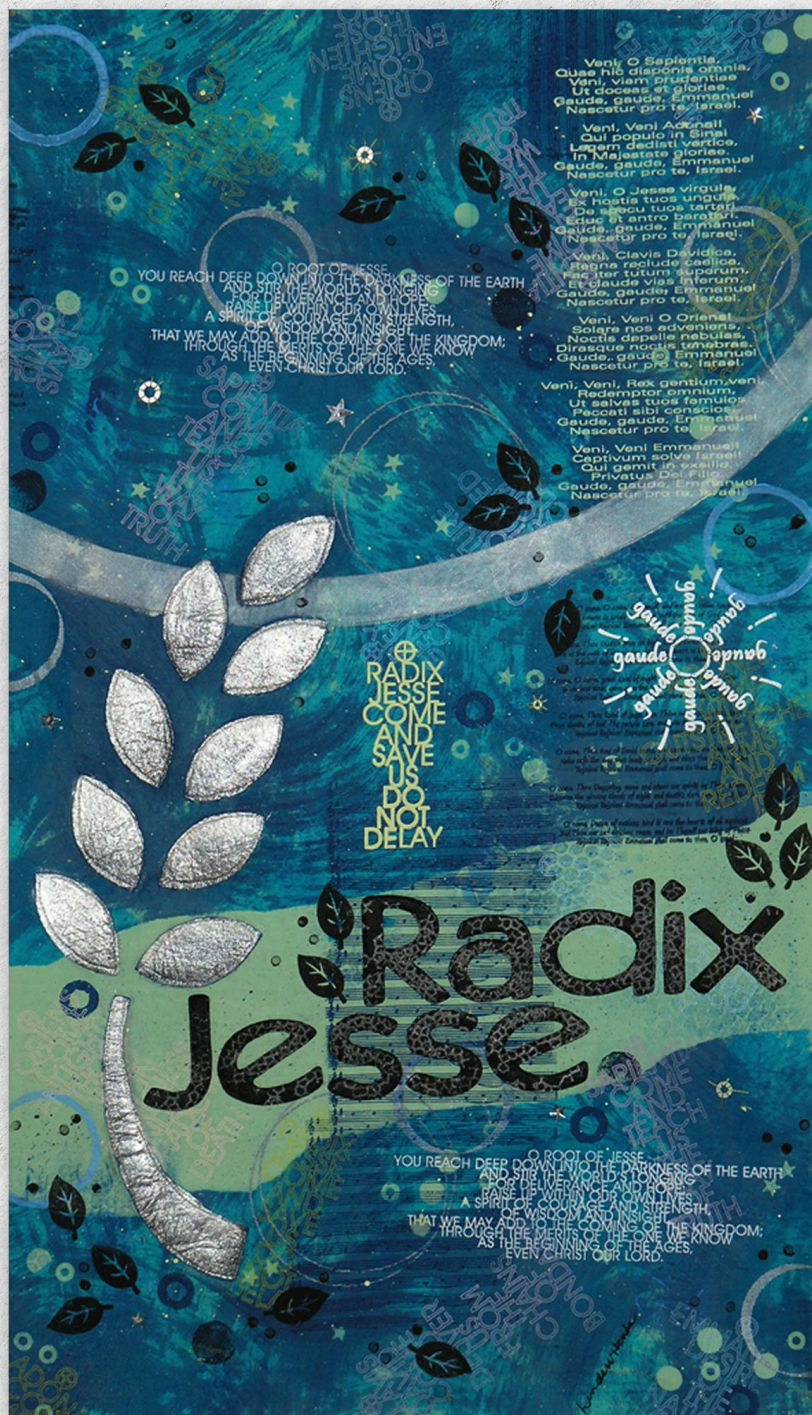


The Great O Antiphons is a seven-piece installation inspired by the ancient Advent collects of the same name. Dating back to the fourth or fifth centuries, the prayers address God using several Old Testament names and express a growing sense of urgency for the Messiah's coming, giving voice to human longings that are as relevant today as they were in centuries past.

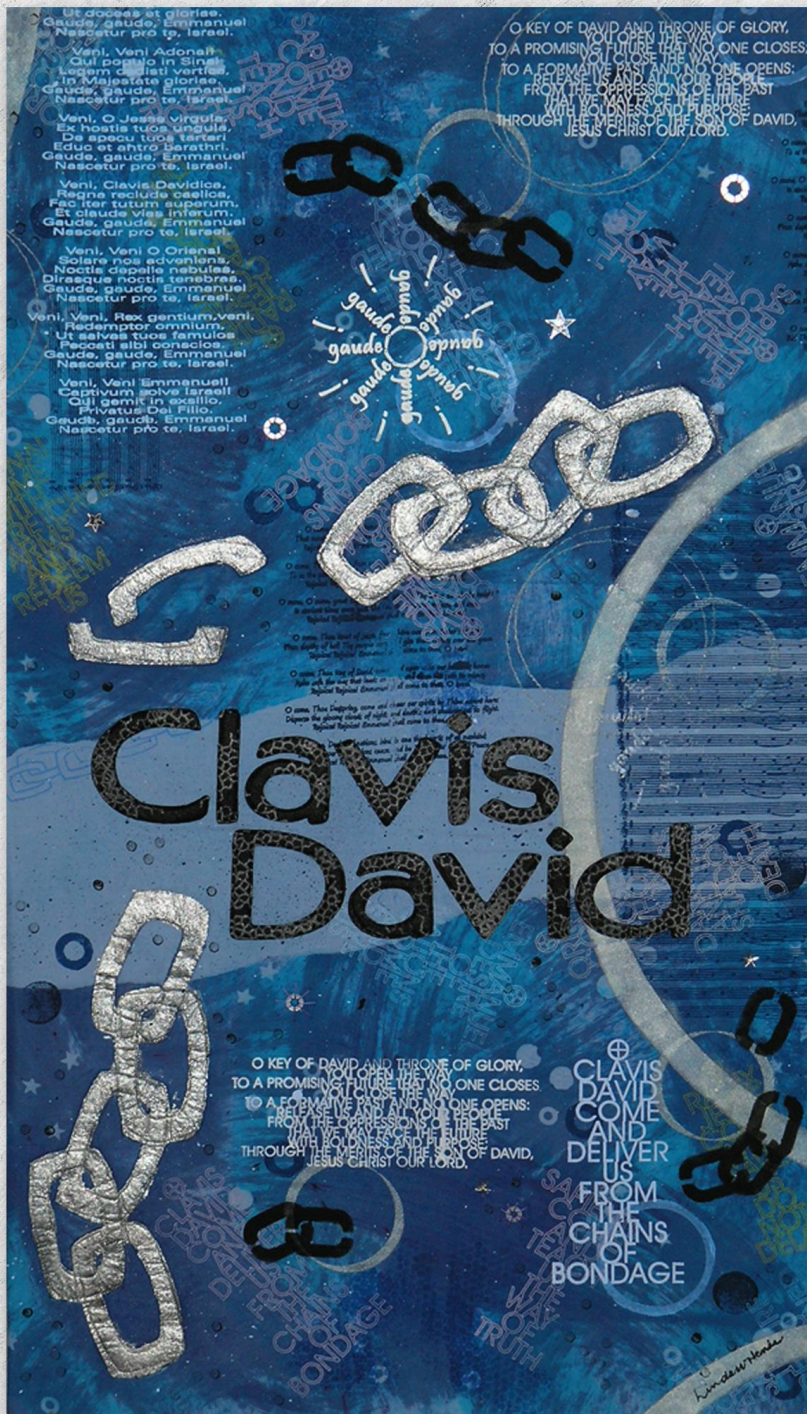
The installation dimension of the collection is 176 inches wide by 41 inches high. In particular demand during the Advent season, this collection is frequently reserved several liturgical cycles in advance.



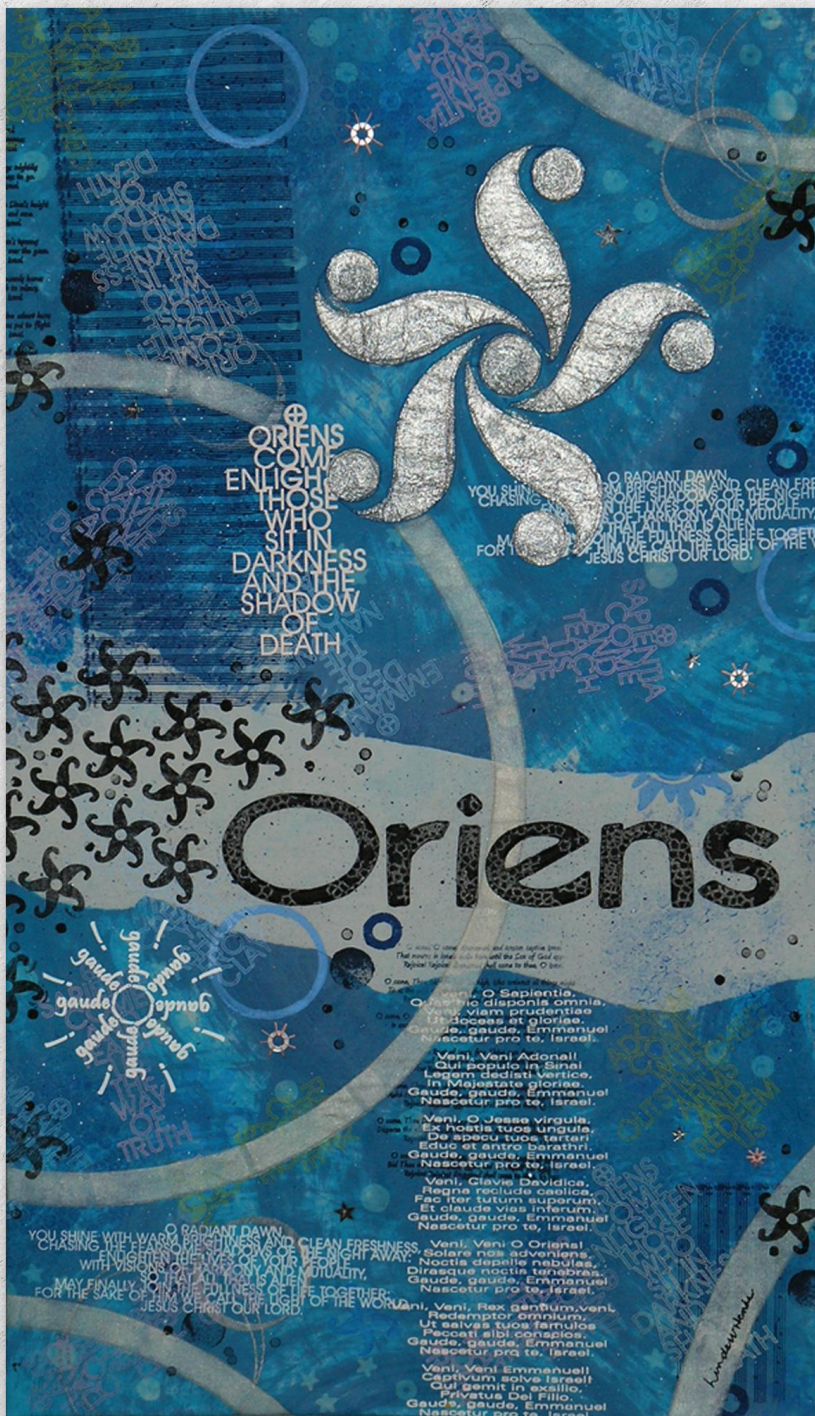
O SAPIENTIA (Wisdom),
your words uttered in the beginning
generated a world of beauty and goodness,
giving purpose and value to each creature:
instruct us in the ways of truth and understanding,
that we may nurture the world with justice and joy
and that the world's beauty and goodness may flourish;
through the One whom we know as
the Wisdom of the Ages, even Christ our Lord.



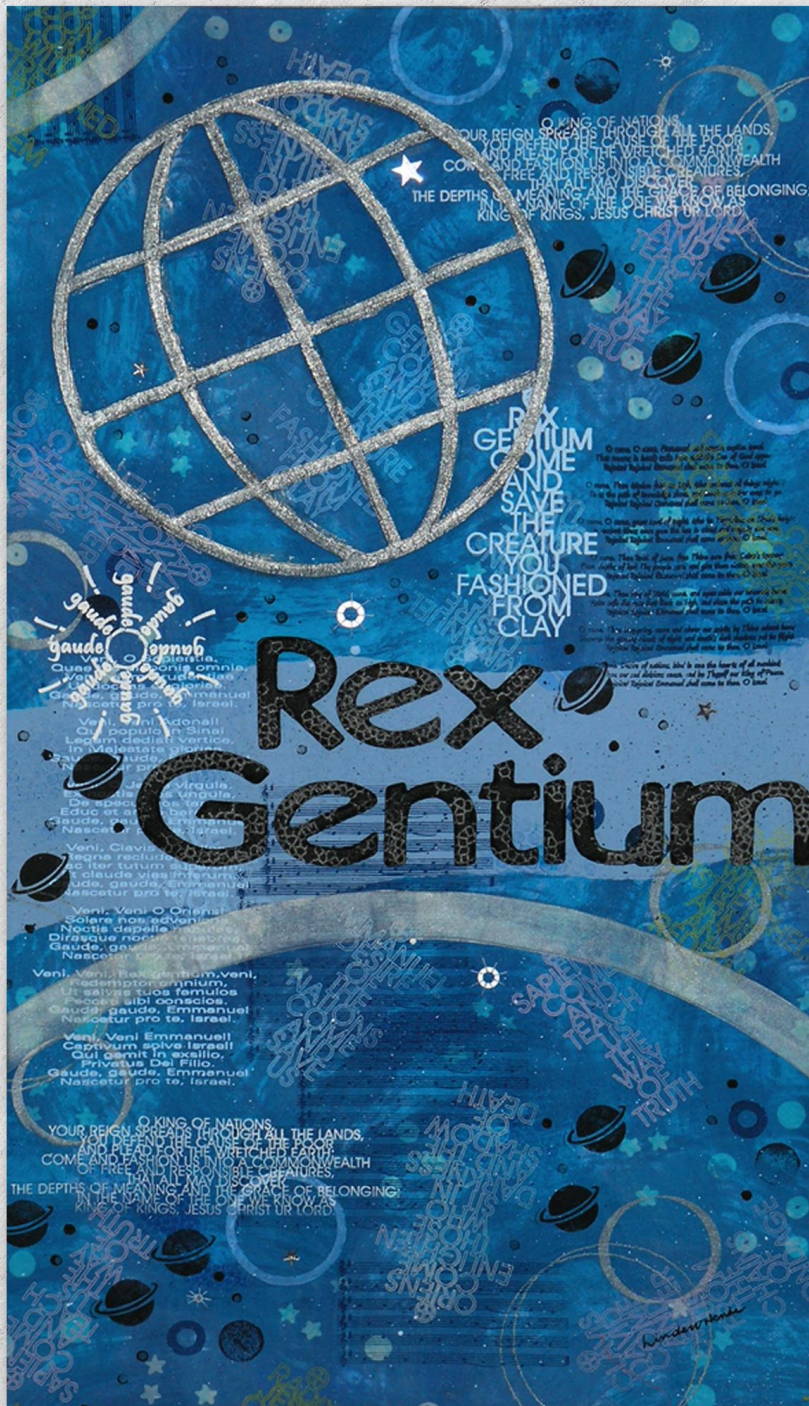
O RADIX JESSE (Branch of Jesse),
you reach deep down into the darkness of the earth
and stir the world's longings for deliverance and hope;
raise up within our own lives
a spirit of courage and strength, of wisdom and insight,
that we may add to the coming of the kingdom;
through the merits of the One we know
as the Beginning of the Ages, even Christ our Lord.



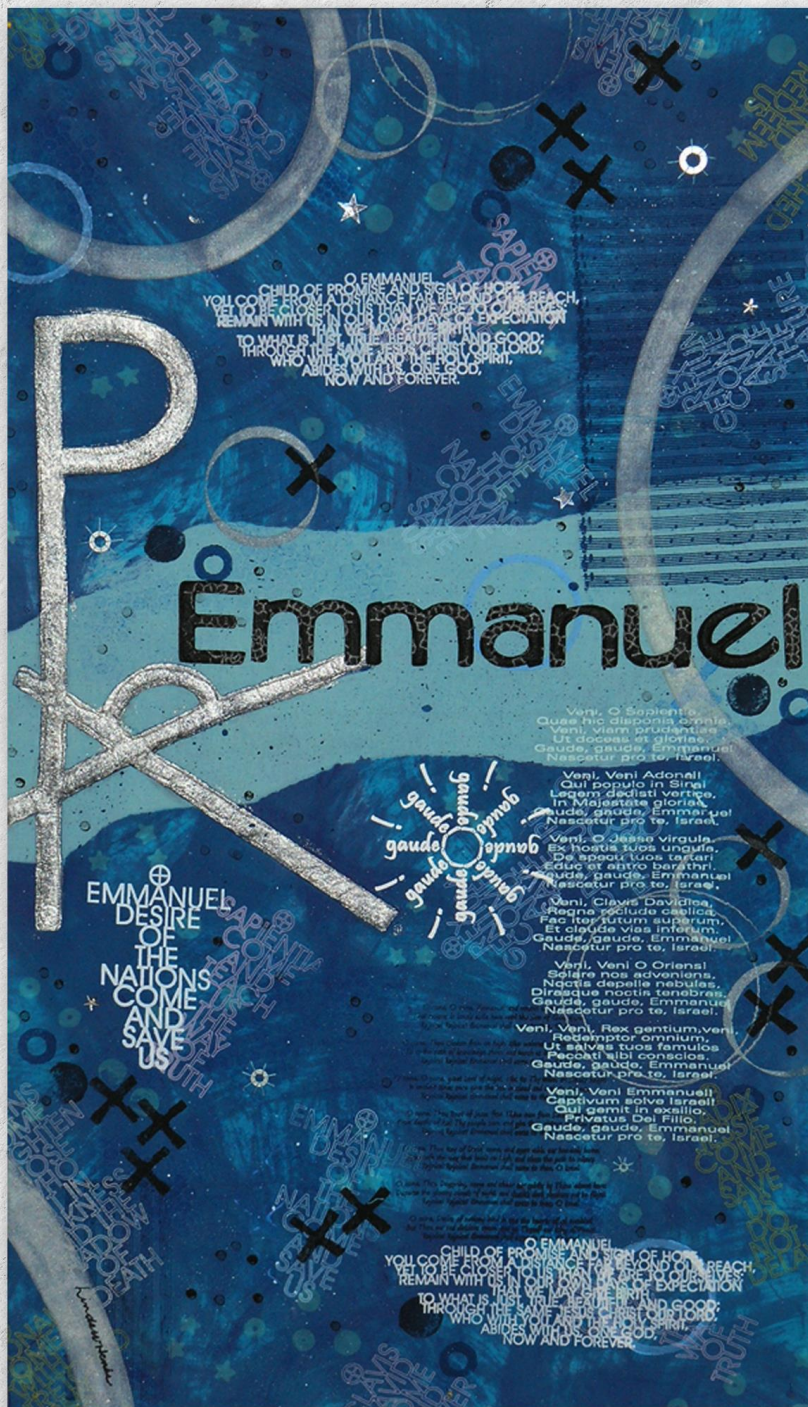
O CLAVIS DAVID (Key of David),
you open the way to a promising future that no one closes;
you close the way to a formative past and no one opens:
release us and all your people
from the oppressions of the past
that we may face the future with boldness and purpose;
through the merits of
the Son of David, Jesus Christ our Lord.



O ORIENS (Rising Dawn),
 you shine with warm brightness and clean freshness,
 chasing the fearsome shadows of the night away:
 enlighten the lives of your people
 with visions of harmony and mutuality,
 so that all that is alien may finally join
 in the fullness of life together;
 for the sake of the One we call
 the Light of the World, Jesus Christ our Lord.



O REX GENTIUM (Ruler of the Nations),
your reign spreads through all the lands
as you defend the cause of the poor
and plead for the wretched of the earth:
come and fashion us into
a commonwealth of free and responsible creatures,
that all may discover
the depths of meaning and the grace of belonging;
in the name of the One we know
as King of Kings, Jesus Christ our Lord.



O EMMANUEL (God with Us),
you come from a distance far beyond our reach,
yet to be closer to us than we are to ourselves:
remain with us in our own days of expectation
that we may give birth
to what is just, true, beautiful, and good;
through the same Jesus Christ our Lord,
who with you and the Holy Spirit,
abides with us, one God now and forever.

PASSION PILGRIMAGE

Journey along the Way of the Cross



The *Passion Pilgrimage: Journey along the Way of the Cross* collection features 18 small works measuring 12.75 inches by 12.75 inches, with each work highlighting a signpost in Jesus' journey from Passion Sunday to Easter.

The collection lends itself to a variety of installation schema, the most effective of which is a linear format that allows "space" between the works and cultivates an experience of devotional pilgrimage. This collection is in particular demand during the Lenten season.



I — PARADE
Jesus Enters Jerusalem



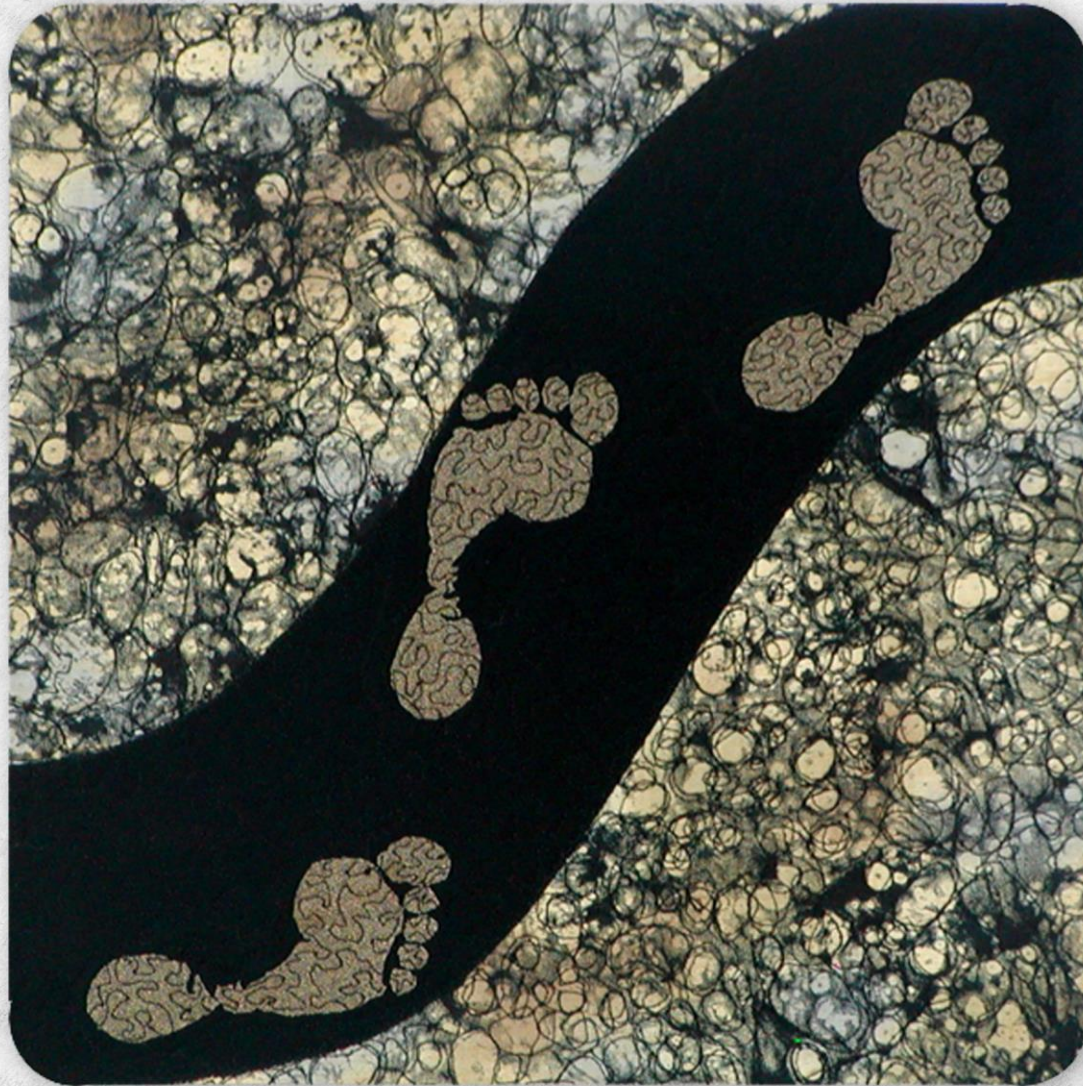
II — EXTRAVAGANCE
An Anonymous Woman Anoints Jesus



III — LEADERSHIP
Jesus Washes the Disciples' Feet



IV — OFFERING
Jesus Offers the Gift of Himself



V — WILL POWER
Jesus Prays in the Garden



VI — BETRAYAL
A Friend Turns Against Jesus



VII — ABDICATION
Pilate Abdicates Responsibility for Jesus' Fate



VIII — DENIAL
Peter Denies Jesus



IX — HUMILIATION
The Soldiers Cast Lots for Jesus' Garments



X—WELFARE
Simon Is Forced to Assist Jesus



XI—ENCOUNTER
Jesus Meets the Women of Jerusalem



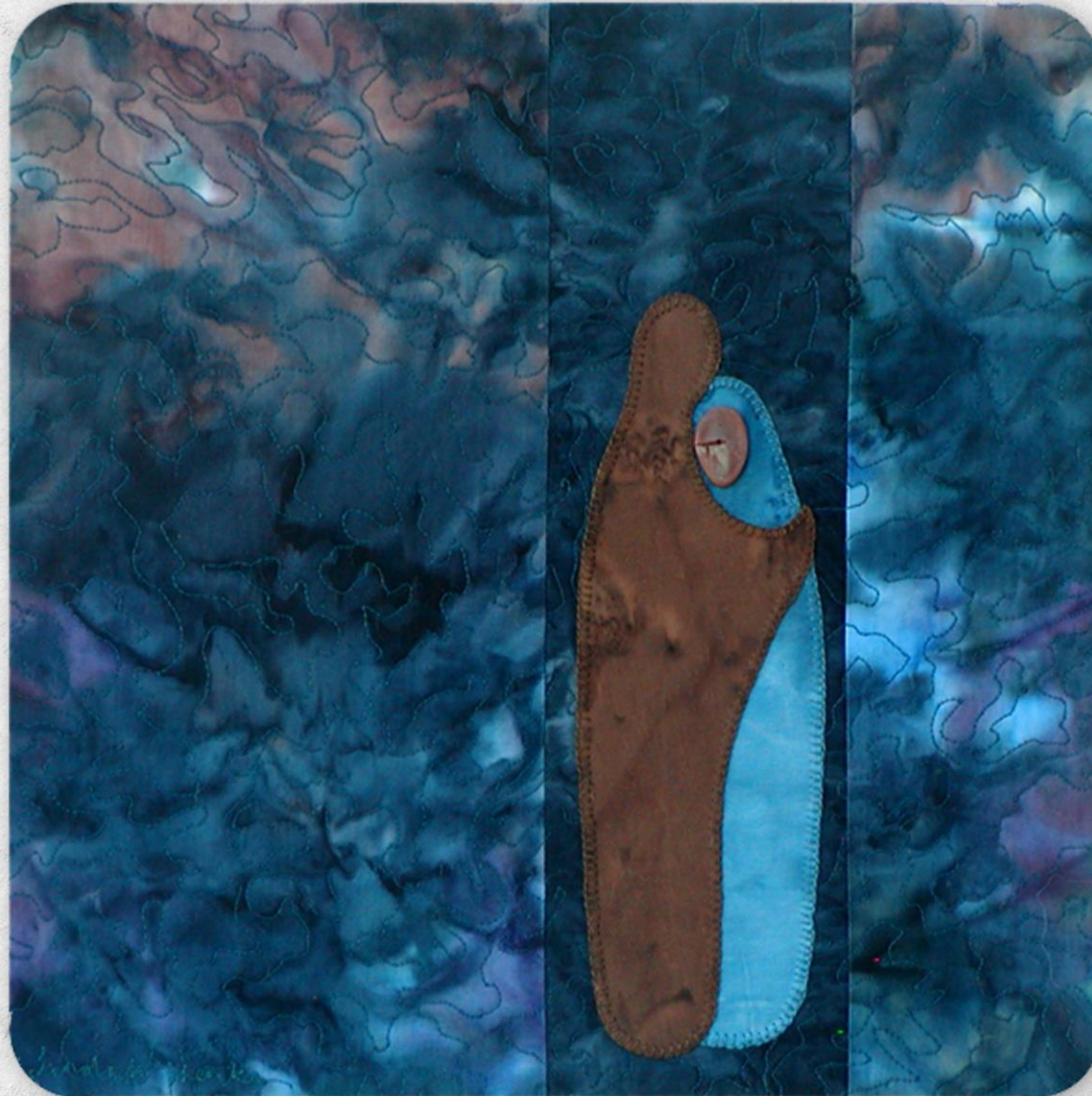
XII—CRUCIFIXION
Jesus Is Nailed to the Cross



XIII — PROXIMITY
Jesus Hangs on the Cross between Two Thieves



XIV — VIGIL
Jesus Is Supported by the Faithful Women



XV — FAMILY

Jesus Entrusts His Mother and His Disciple to Each Other



XVI—DEAD END
Jesus Succumbs to Death



XVII — 'DEM BONES
Jesus Is Buried



XVIII—WOMEN'S WORK
The Women Return to Anoint Jesus' Body

Pricing Information

EXHIBITION COLLECTIONS

I am pleased to lease the following collections to venues throughout the United States:

Inspired by biblical texts, *Envisioning the Word* is a collection of two and three-dimensional work in varying styles and dimensions, with the precise number fluxuating based on current availability. The exhibition fee of \$300 is for a period of four-to-six weeks.

Great O Antiphons is a seven-piece installation inspired by the ancient Advent collects of the same name. The installation dimension of the collection is 176 inches wide by 41 inches high. In particular demand during the Advent season, the exhibition fee for this collection is \$300 for a period of four-to-six weeks.

Passion Pilgrimage: Journey along the Way of the Cross is a collection featuring 18 small works, each measuring approximately 13 inches by 13 inches, with each piece highlighting a signpost on Jesus' journey from Passion Sunday to Easter. The collection lends itself to various installations, the most effective being a linear format that allows "space" between the works and cultivates an experience of devotional pilgrimage. This collection is in particular demand during the Lenten season. The exhibition fee of \$300 is for a period of approximately seven weeks.

Each exhibition collection includes *signage* and a *sample media release* for promoting the exhibition. *Color postcards* are available with advance notice at a modest cost. Please note that shipping costs are in addition to the exhibition fee.

I welcome inquiries about the collections via email at linda@lindahenke.com.



©2021, Linda Witte Henke. All rights reserved.

This presentation may not be
reproduced in any manner or for any purpose
without the express permission of the artist.

linda@lindahenke.com
www.lindahenke.com